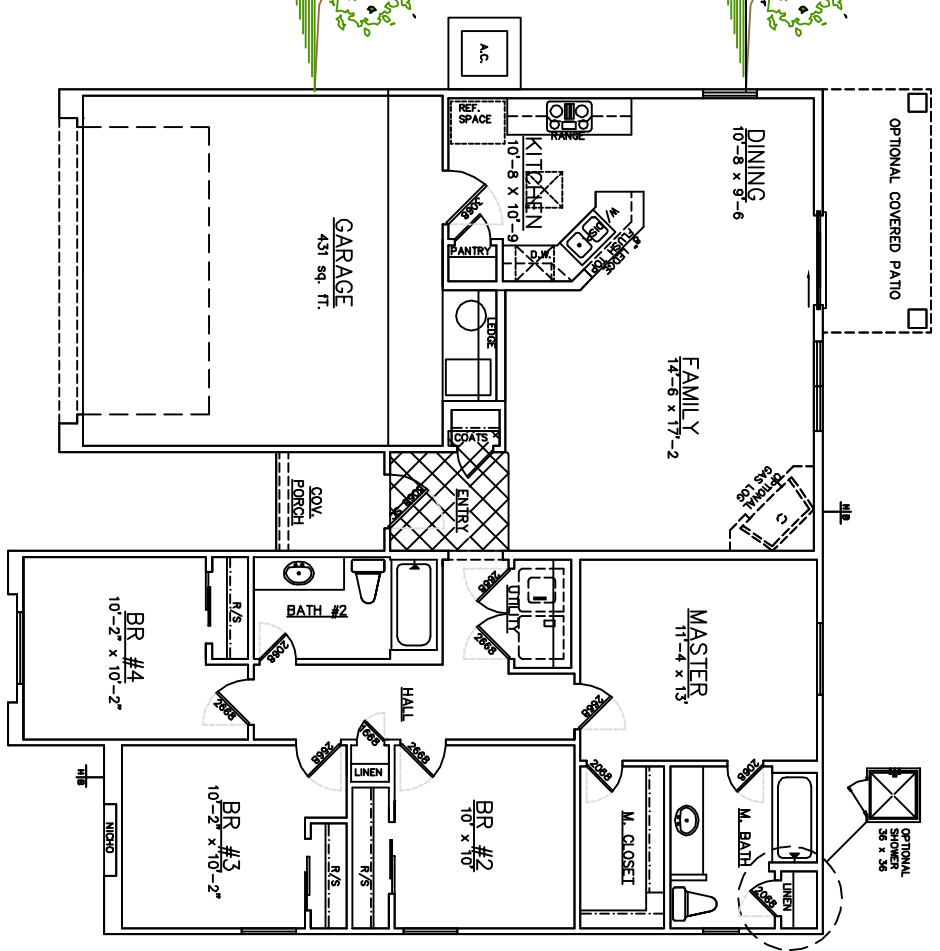
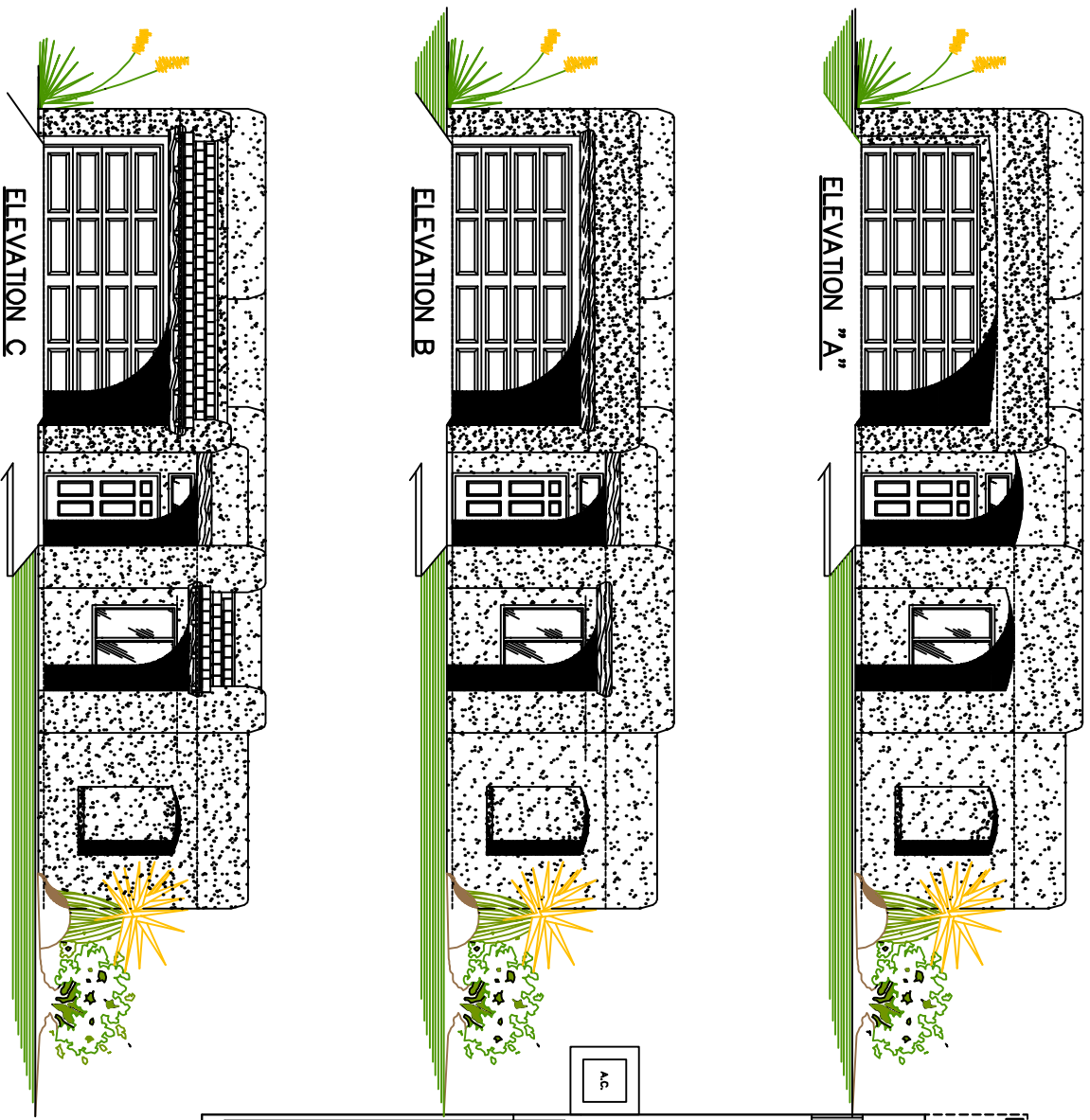


SUMMERTREE HOMIES

ANDALUCIA AT LA CVOZ

KEN JOHNSON, SALES 505-991-2595



Vitex

HEATED AREA = 1448 sq. ft.

All square footages and dimensions are approximate. This drawing is conceptual only. Actual construction may vary. Landscaping not included. These designs and drawings are CONFIDENTIAL and exclusive property of Summertree Homes by Ken Brooks, Inc. and are not to be used or duplicated without the express permission of Summertree Homes by Ken Brooks, Inc.